



# StreamConnect for Genetec™ Security Center

Version 2.0

## Installation and User's Guide

Copyright © 2026 Allied Telesis, Inc.

All rights reserved. No part of this publication may be reproduced without prior written permission from Allied Telesis, Inc.

Microsoft and Internet Explorer are registered trademarks of Microsoft Corporation. All other product names, company names, logos or other designations mentioned herein are trademarks or registered trademarks of their respective owners.

Allied Telesis, Inc. reserves the right to make changes in specifications and other information contained in this document without prior written notice. The information provided herein is subject to change without notice. In no event shall Allied Telesis, Inc. be liable for any incidental, special, indirect, or consequential damages whatsoever, including but not limited to lost profits, arising out of or related to this manual or the information contained herein, even if Allied Telesis, Inc. has been advised of, known, or should have known, the possibility of such damages.

# Contents

---

<b>Overview .....</b>	<b>5</b>
Guidelines for StreamConnect.....	5
<b>Network Configurations for VMS.....</b>	<b>6</b>
Standard Network Configuration for VMS.....	6
Genetec™ Security Center Configurations with StreamConnect .....	6
<b>Installing and Configuring StreamConnect.....</b>	<b>10</b>
Hardware Requirement.....	10
Software Requirements .....	10
Genetec™ Licensing Requirement .....	10
Installing the Plugin on Your System .....	11
Configuring StreamConnect Using Config Tool .....	13
Verifying that StreamConnect is Up and Running .....	16
<b>Configuring ATI Switch and Cameras.....</b>	<b>19</b>
Guidelines for Configuring ATI Switch and Cameras.....	19
Adding an Allied Telesis Switch .....	19
Associating Cameras to Allied Telesis Switch Ports.....	22
<b>Managing the Allied Telesis Switch Ports Connected to Cameras.....</b>	<b>25</b>
Viewing the Power Consumption on the ATI Switch and Ports .....	25
Enabling Ports and Power over Ethernet, or Modifying Power Allocation .....	27
Rebooting the ATI Switch .....	28
Enabling Ports and Power over Ethernet Using Security Desk .....	29
<b>Managing User Access.....</b>	<b>31</b>
StreamConnect Privileges .....	31
Guidelines to Setting ATI StreamConnect Privileges.....	32
Assigning ATI StreamConnect Privileges for a User or User Group.....	32
<b>Limiting User Access to Cameras, Switch, StreamConnect.....</b>	<b>34</b>
Creating a Partition .....	34
Moving Entities into the Partition.....	37

Moving Plugin Instances into the Partition .....	38
Limiting a User or User Group to Access only Entitles in Partitions .....	39

## Overview

---

StreamConnect for Genetec™ Security Center is a plugin to Genetec™ video management system (VMS) where the surveillance cameras are connected to Allied Telesis (ATI) Power over Ethernet (PoE) switches.

StreamConnect allows you to perform tasks such as rebooting the surveillance cameras and managing port power allocations in Genetec™ Security Center without network administrator credentials.

Security Center, developed by Genetec™, includes a system that manages surveillance cameras and recordings. Surveillance cameras are often connected to and powered by PoE switches, such as Allied Telesis PoE switches.

### **Guidelines for StreamConnect**

Here are guidelines for network configurations for StreamConnect:

- ❑ StreamConnect supports multi-server configurations as well as single-server configurations.
- ❑ StreamConnect supports the Allied Telesis Layer 2 and Layer 3 PoE switches.
- ❑ StreamConnect is not designed to be used with switches configured in the Virtual Chassis Stacking (VCS) mode.

## Network Configurations for VMS

---

This section explains a standard network configuration for VMS and network configurations that Allied Telesis supports for StreamConnect.

### Standard Network Configuration for VMS

Figure 1 shows a standard network configuration for a VMS installation. In this configuration, networks for surveillance cameras and client machines are separated. Cameras are physically exposed to potential intruders so that segregating the camera network provides security to the internal management networks. Separating networks also prevents video traffic caused by the cameras from consuming bandwidth on the client network.

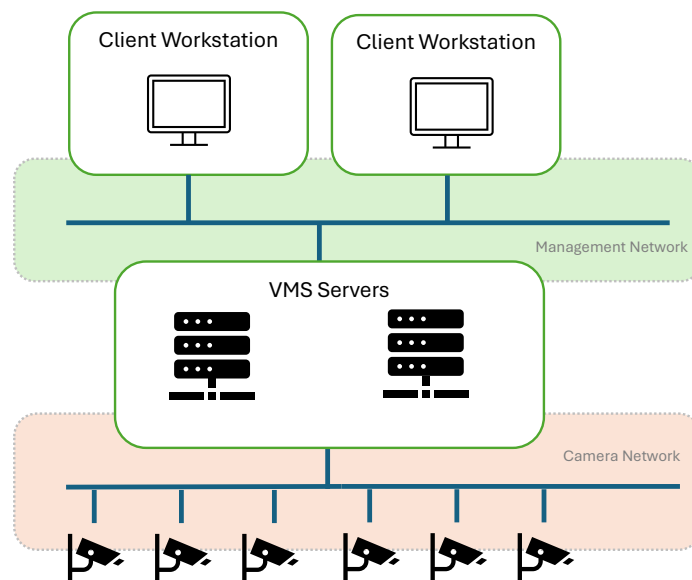


Figure 1. Standard Network Configuration for VMS

### Genetec™ Security Center Configurations with StreamConnect

Network configurations with Genetec™ Security Center that Allied Telesis supports for StreamConnect are:

- ❑ “Single-Server Security Center Configuration with the Allied Telesis Switch” on page 7
- ❑ “Multiple-Server Security Center Configuration with the Allied Telesis Switch” on page 8
- ❑ “Security Center Configuration with Allied Telesis Layer 3 Switch” on page 9

These network configurations also provide security to the internal management networks and prevent video traffic from consuming bandwidth on the client network. In addition, the AlliedWare Plus™ PoE switch simplifies cabling and maintenance for the cameras because a PoE switch delivers both data and power to connected devices through the Ethernet cables.

## Single-Server Security Center Configuration with the Allied Telesis Switch

A network configuration with only a main server and surveillance cameras connected to AlliedWare Plus™ PoE switches is shown in Figure 2.

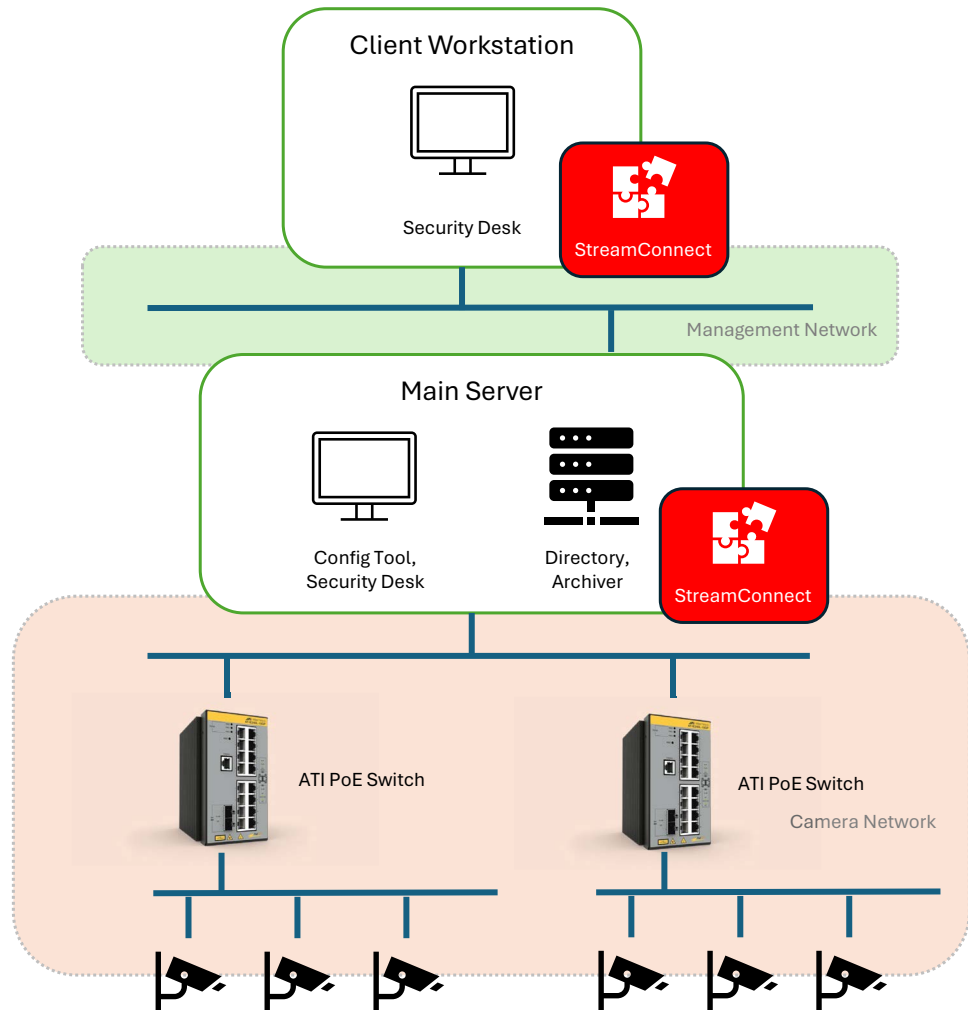


Figure 2. Single-Server VMS Configuration with Allied Telesis Switch

In the network configuration above, the Security Center client communicates with the ATI PoE switches via the main server.

## Multiple-Server Security Center Configuration with the Allied Telesis Switch

Figure 3 shows a network configuration with multiple expansion servers. An archiver is running on each expansion server, which is connected to a private camera network.

As shown in Figure 3, a StreamConnect instance must be created on each expansion server that an ATI switch is connected to, in addition to the main server and client workstation.

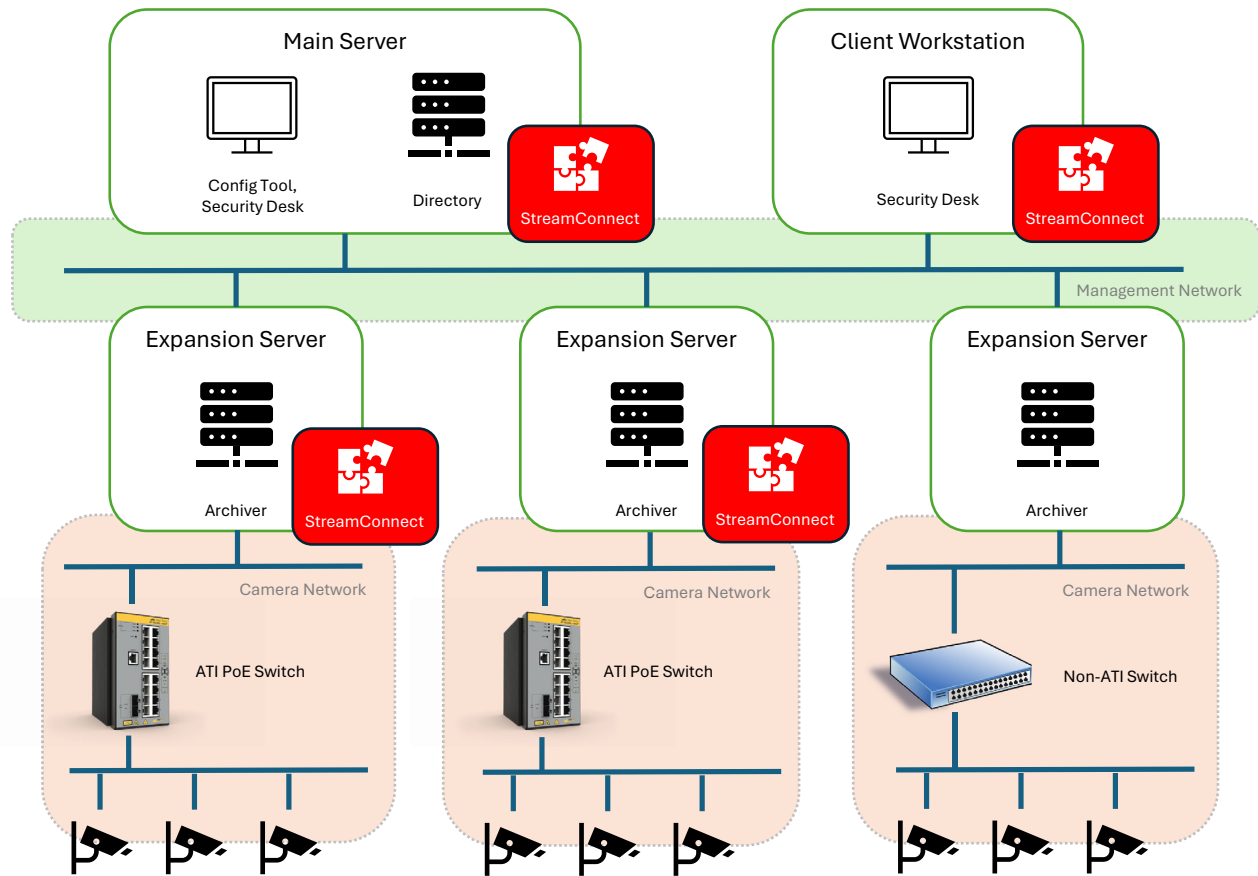


Figure 3. Multiple Expansion Servers with StreamConnect

StreamConnect supports networks where multiple servers are configured as well as a single server configuration.



## Security Center Configuration with Allied Telesis Layer 3 Switch

StreamConnect supports a VMS network configuration with the Allied Telesis Layer 3 switch. You can simplify a network configuration with an ATI PoE Layer 3 switch. Figure 4 shows that the ATI PoE Layer 3 switch's routing capability provides security by separating the camera network and management network.

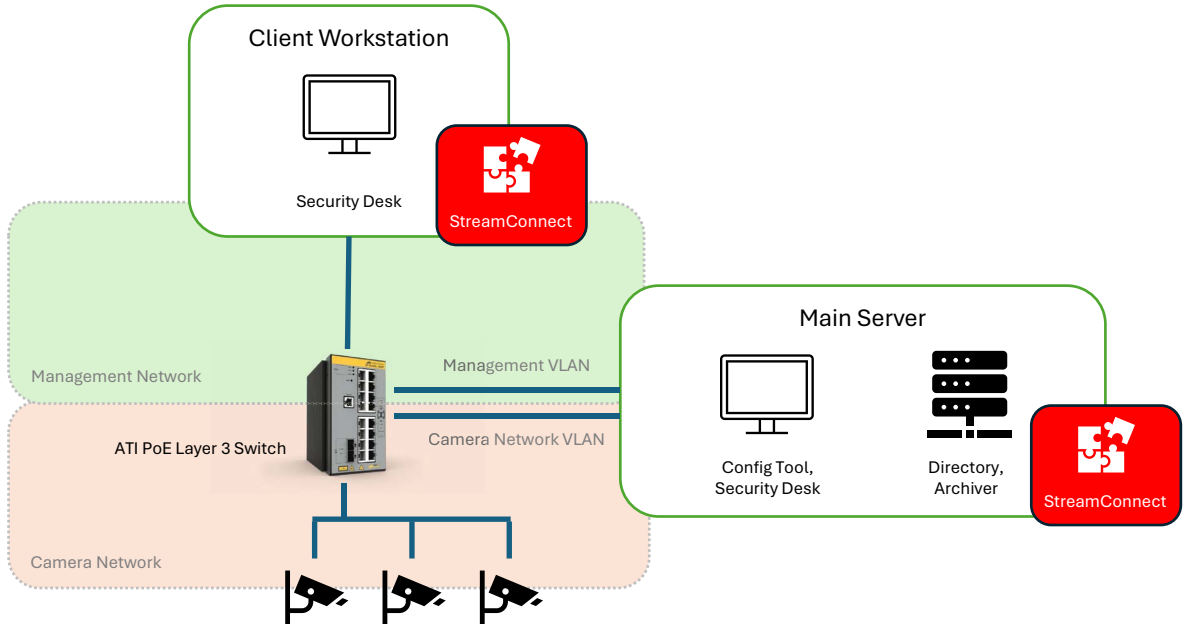


Figure 4. Security Center Configuration with Allied Telesis Layer 3 Switch

# Installing and Configuring StreamConnect

---

You need to Install the StreamConnect plugin on all machines: the main server, expansion servers, and client-only machines. After StreamConnect is successfully installed, configure the plugin using Genetec™ Security Center **Config Tool**.

## Hardware Requirement

StreamConnect is compatible with any AlliedWare Plus™ PoE-capable Layer 2 and Layer 3 switches. AlliedWare Plus™ is an operating system for Allied Telesis switch and router products.

## Software Requirements

Here is a list of software requirements:

- ❑ AlliedWare Plus™ version 5.5.4 or later for Allied Telesis switches
- ❑ Genetec™ Security Center software version 5.13.2.0 or later

Before StreamConnect is installed, Genetec™ Security Center software must already be installed on your system.

- ❑ Windows 11 Operating System for your server and/or client machine.

## Genetec™ Licensing Requirement

To run StreamConnect in Genetec™ Security Center, you must have an integration license from Genetec™ on your system. This license provides a pool of connection instances that are shared across all StreamConnect components.

To order the license, contact your Genetec™ channel partner or sales representative and provide them with:

- ❑ Part number: GSC-1SDK-AlliedTelesis-StreamC
- ❑ Quantity: the number of instances required for your deployment

Each unit of this part number adds one connection instance to the pool. For example, for 4 connection instances, order 4 units of GSC-1SDK-AlliedTelesis-StreamC. Each active plugin role instance or open StreamConnect component consumes one connection instance from the license pool.

For example, the tile widget  in **Tasks** or ATI Switch Management task in **Config Tool** or **Security Desk** is counted as one instance.

---

### Note

When a component is closed or a plugin role is deactivated, the instance is released back to the license pool.

---

To verify available instances, open **Config Tool > About > Certificates** and check the row labeled **StreamConnect** in Figure 5.

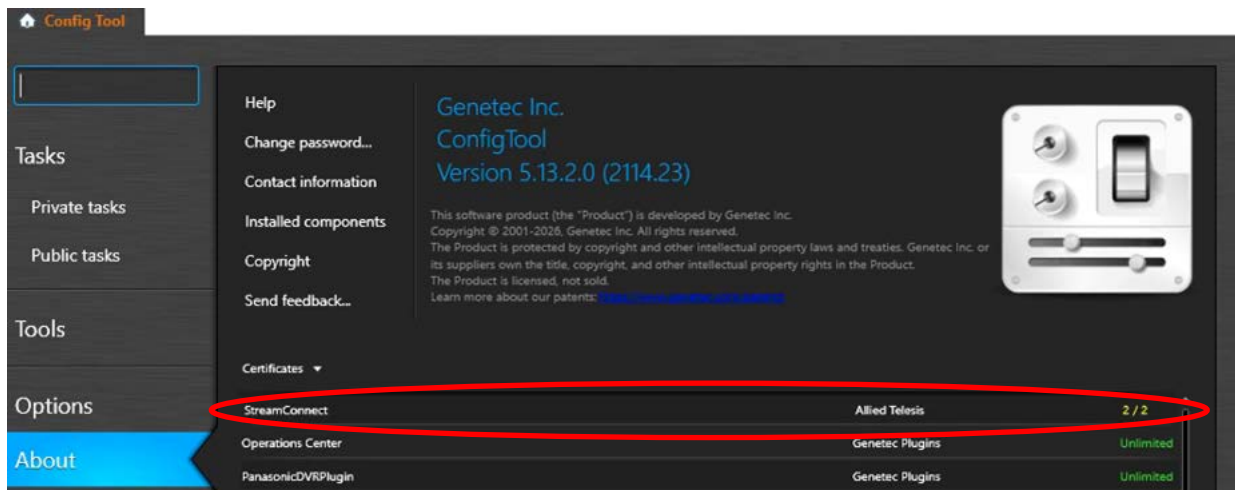




Figure 5. StreamConnect Certificates

## Installing the Plugin on Your System

To install StreamConnect to Security Center on your Windows system:

1. Ensure that your system meets “Hardware Requirement” and “Software Requirements” on this page.
2. Download the StreamConnect installer onto your system.
3. Close the **Config Tool**  and **Security Desk**  applications if they are running.
4. Click the StreamConnect installer. For example:

 Allied Telesis StreamConnect for Genetec 2.n.n.n

5. When Microsoft Defender SmartScreen gives you a warning, click the **More info** link, then click **Run anyway** as shown in Figure 6 on page 12.

### Note

You might receive multiple warnings from Microsoft Defender.

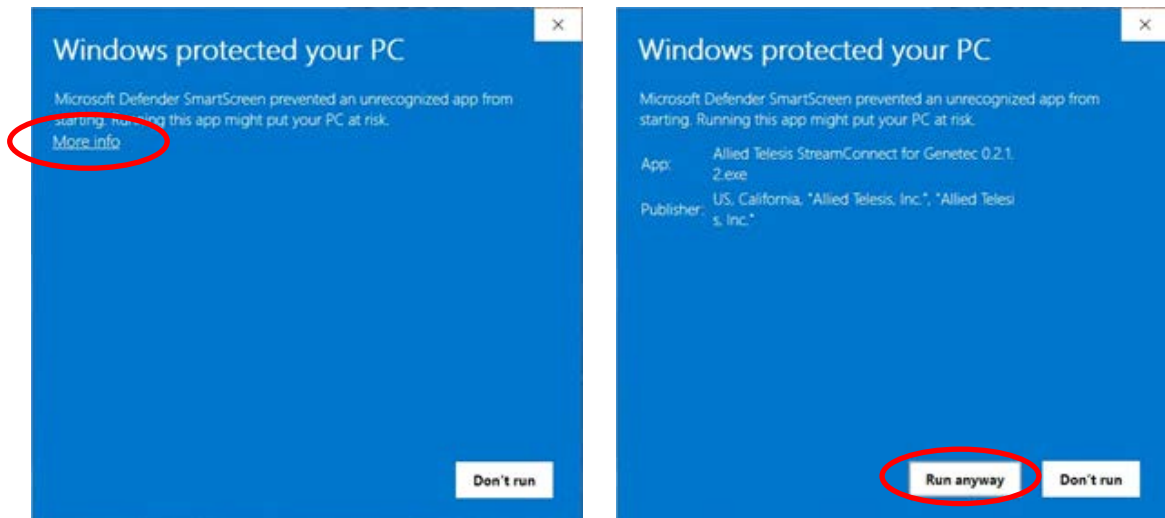


Figure 6. Defender SmartScreens

6. On the User Account Control dialog box, click **Yes** to allow the Installer to proceed. See Figure 7.

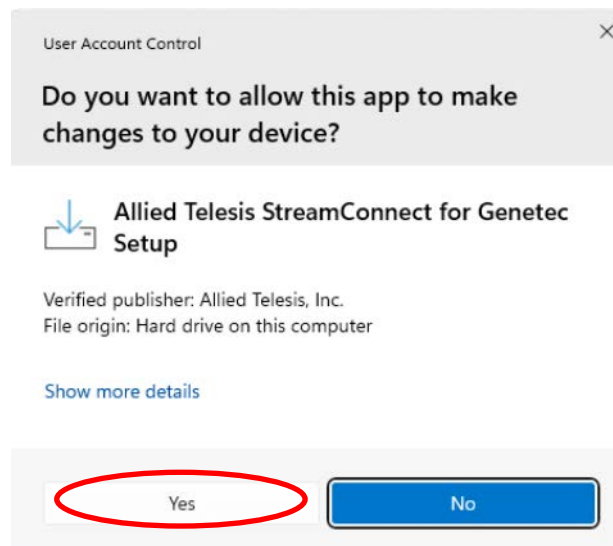


Figure 7. User Account Control Dialog Box

7. On the next Setup screen, click **Install**.  
Wait until the installation process is completed.
8. When the Setup screen notifies you that the installation is completed, click **Finish**.
9. Go to "Configuring StreamConnect Using Config Tool" on page 13.

## Configuring StreamConnect Using Config Tool

After installing StreamConnect, start **Config Tool** and configure StreamConnect.

Here are guidelines for configuring StreamConnect:

- ❑ If you have only a main server, create one StreamConnect instance.
- ❑ If you have one or more expansion servers, create a StreamConnect instance on every server that is running an archiver, which is connected to its own separate private camera network that includes an ATI switch. See Figure 3 on page 8.
- ❑ Name the instance with a unique name, especially when the system has multiple expansion servers.

To configure StreamConnect:

1. Open **Config Tool** and log in.

The **Config Tool** window appears.

2. Click the **Plugins** icon as shown in Figure 8.

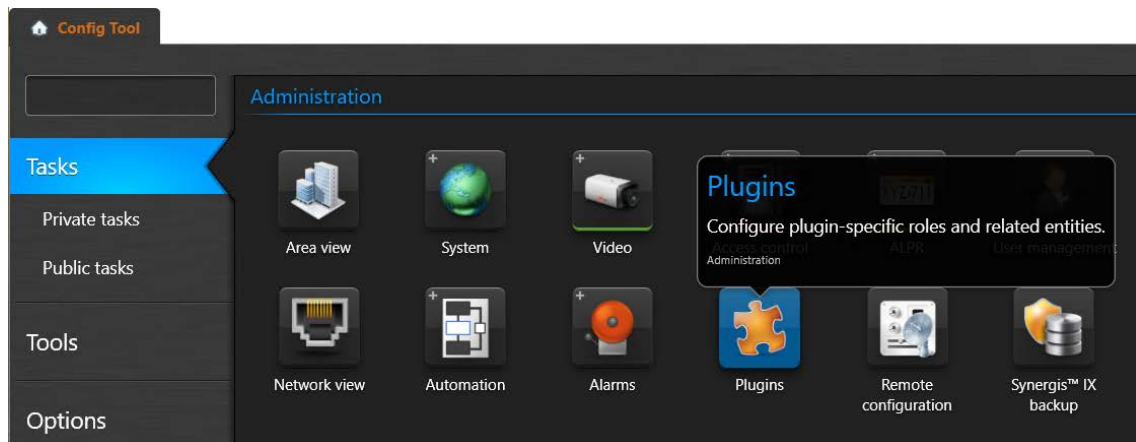


Figure 8. **Config Tool** Window

3. Right-click the name of a server in the left pane and select **Add an Entity > Plugin**. See Figure 9 on page 14.

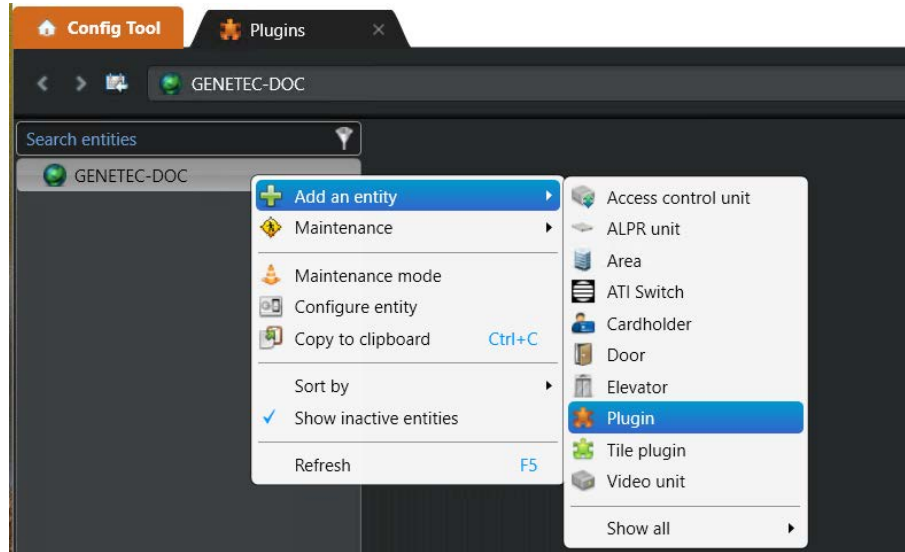


Figure 9. Adding StreamConnect Plugin

If you have only a main server, the **Creating a role: Plugin** window as show in Figure 10 appears.

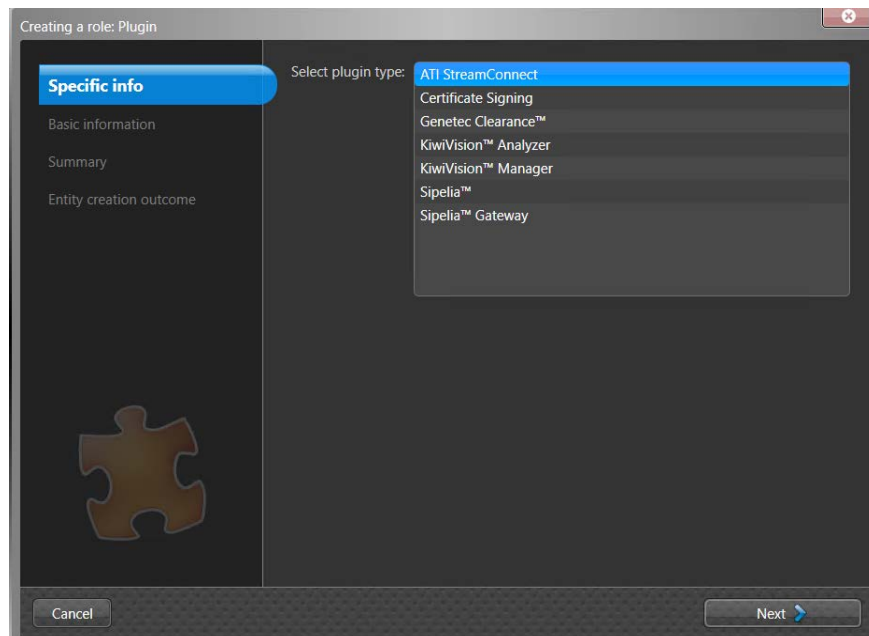


Figure 10. The Creating a role: Plugin Window

If you have one or more expansion servers, the **Creating a role: Plugin** window as shown in Figure 11 on page 15 appears.

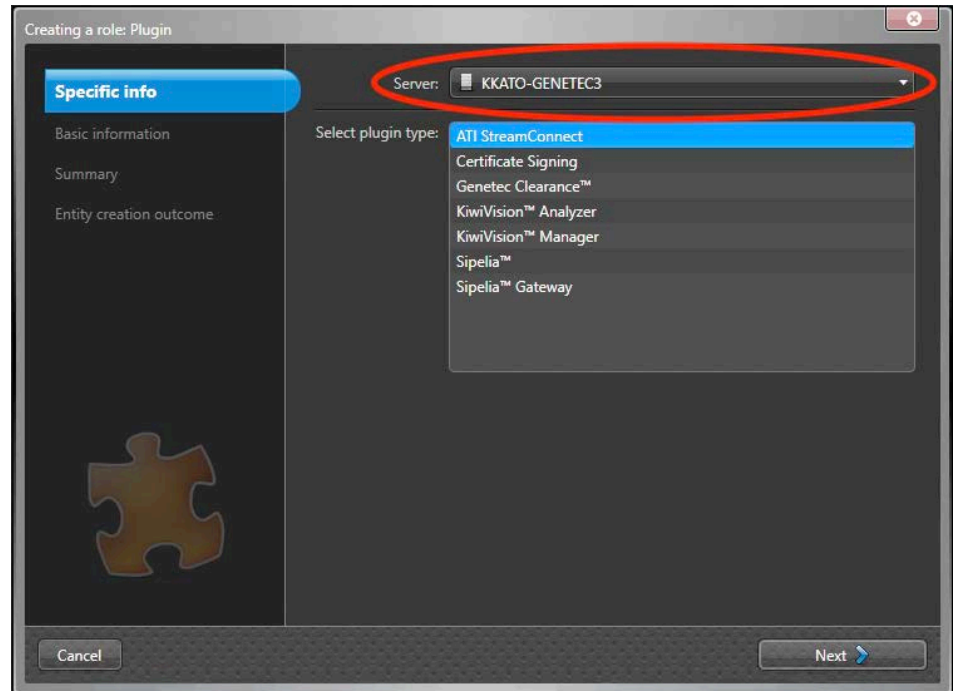


Figure 11. The Creating a role: Plugin Window with Expansion Servers

4. Select a server in the **Server** drop-down menu in Figure 11.

Skip this step if you have no server selections in Figure 10 on page 14.

5. Select **ATI StreamConnect** as a plugin type and click **Next**.
6. On the **Basic information** page, enter a name to the plugin. See Figure 12 on page 16.

---

**Note**

If you have expansion servers configured, Allied Telesis strongly recommends assigning a name to the plugin to associate with the server, instead of the default name.

---

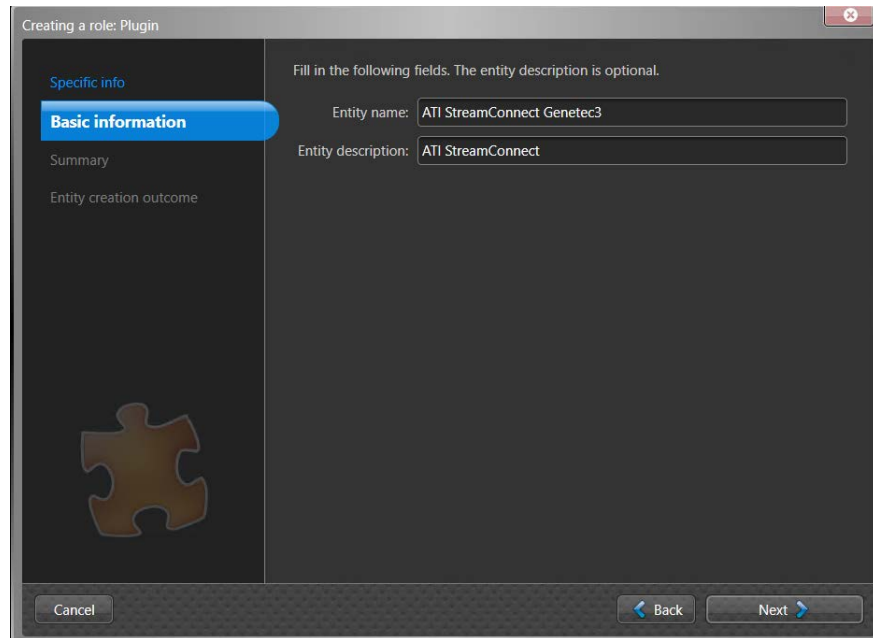


Figure 12. The Creating a role: Plugin Window - Basic Information

7. Click **Next**.

The **Summary** page appears.

8. On the **Summary** page, verify the information and click **Create**.
9. Wait a few moments for ATI StreamConnect to load and start.

You receive a message that the operation was successful. See Figure 13.

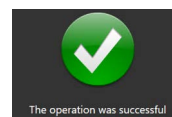


Figure 13. StreamConnect Configuration is Done

10. If you have multiple expansion servers (archivers), repeat Step 4 to Step 9 to create a StreamConnect instance per server.

## Verifying that StreamConnect is Up and Running

To verify that StreamConnect is running correctly:

1. Open **Config Tool** and log in.

The **Config Tool** window appears.

2. Click the **Plugins** icon as shown in Figure 8 on page 13.



3. Select the name of an ATI StreamConnect instance in the left pane.
4. Right-click **Maintenance** > **Diagnose** on the bottom menu. See Figure 14.

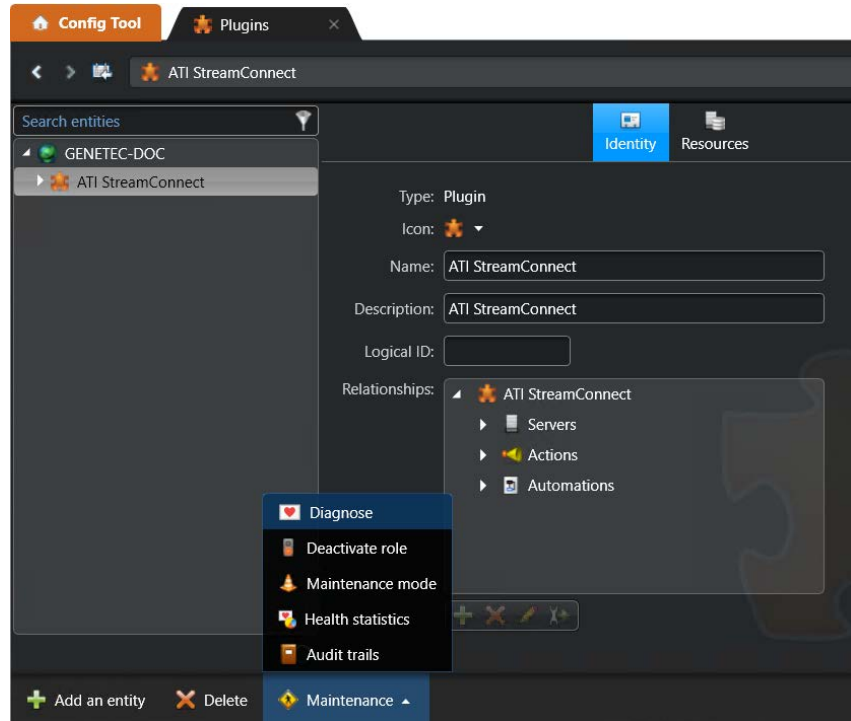


Figure 14. StreamConnect > Maintenance > Diagnose

If the **Diagnosis** window in Figure 15 appears, StreamConnect is up and running.

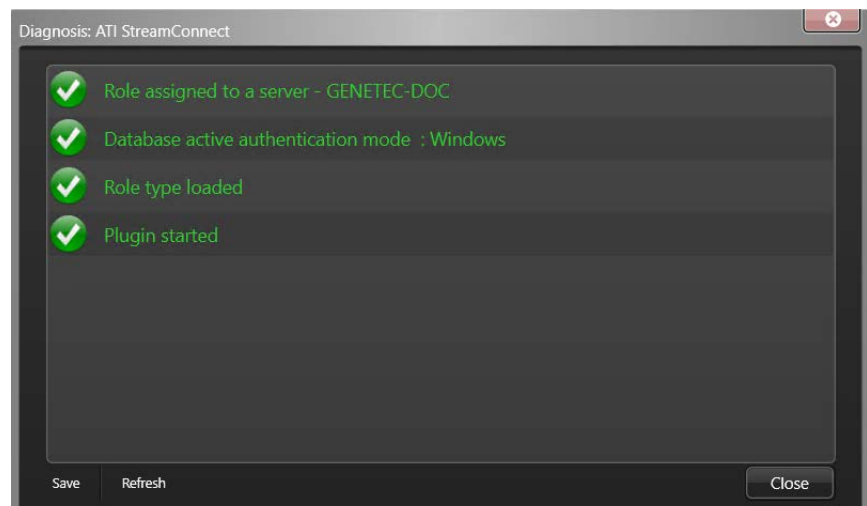


Figure 15. Diagnosis Window

If the **Diagnosis** window in Figure 16 appears, the plugin role fails to start.

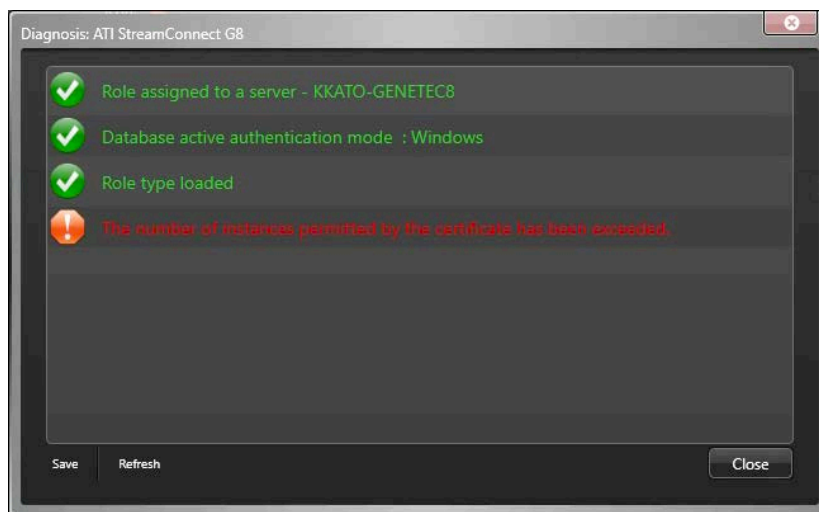


Figure 16. Diagnosis Window with an Error

If sufficient StreamConnect instances are *not* available in the license pool, the **Diagnosis** window displays the message: "The number of instances permitted by the certificate has been exceeded."

For more information, go to "Genetec™ Licensing Requirement" on page 10.

## Configuring ATI Switch and Cameras

---

After installing and configuring StreamConnect, or when having new surveillance cameras connected to the Allied Telesis switch in your camera network, perform the following tasks:

1. "Adding an Allied Telesis Switch" on page 19.

If the Allied Telesis switch has already been added, select your switch and skip the switch configuration steps.

2. Adding a Surveillance Camera.

If cameras have already been added, skip this task.

3. "Associating Cameras to Allied Telesis Switch Ports" on page 22.

If you need to access the Allied Telesis switch for the basic switch settings, such as the switch's management IP address and administrative user credentials or for upgrading AlliedWare Plus™ firmware to version 5.5.4 or later, visit the Allied Telesis website at:

- ❑ [Getting Started with the AlliedWare Plus Command Line Interface](#)
- ❑ [AlliedWare Plus Feature Overview and Configuration Guides](#)

### Guidelines for Configuring ATI Switch and Cameras

Here are guidelines for configuring the ATI switch and cameras:

- ❑ When configuring the ATI switch, use the administrative account. Without administrative privilege, you can manage surveillance cameras, but not ATI switches.
- ❑ Allied Telesis recommends using Power over Ethernet (PoE) ports on the switch for surveillance cameras and non-PoE ports as uplink ports. If a PoE port is used as an uplink port, the system might mistakenly detect a camera elsewhere in the network as if it is connected to the PoE port.

### Adding an Allied Telesis Switch

To add an Allied Telesis switch to Genetec™ Security Center:

1. Ensure that Allied Telesis switches are cabled and powered on.
2. Open **Config Tool** and log in.

The **Config Tool** window appears.

3. Click the **Area View** icon on the **Config Tool > Tasks** page. See Figure 17 on page 20.

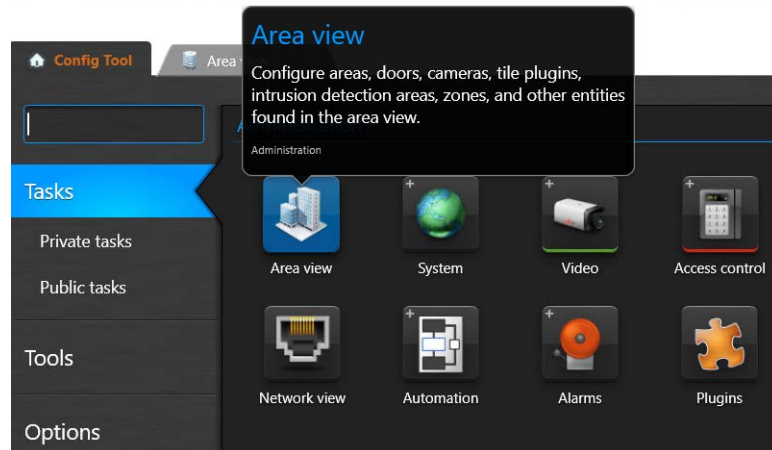


Figure 17. Config Tool > Tasks > Area View

The **Area View** page appears.

4. Select **Add an entity** > **ATI Switch** from the bottom menu. See Figure 18.

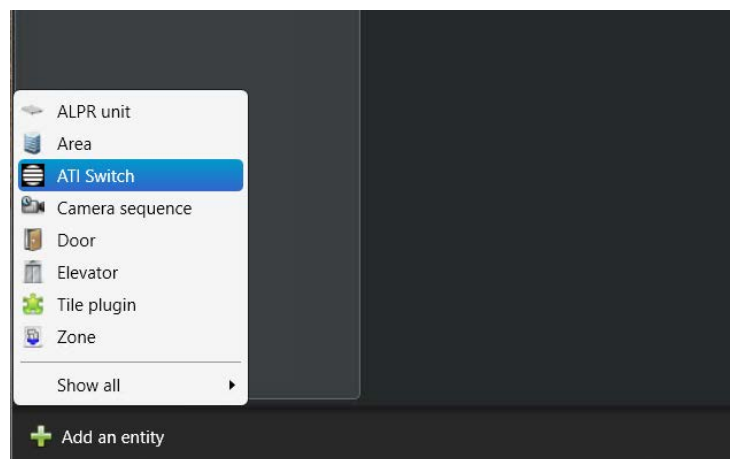


Figure 18. Adding an ATI Switch

A configuration page for a new ATI switch appears.

5. Assign a unique name to the switch. See Figure 19.

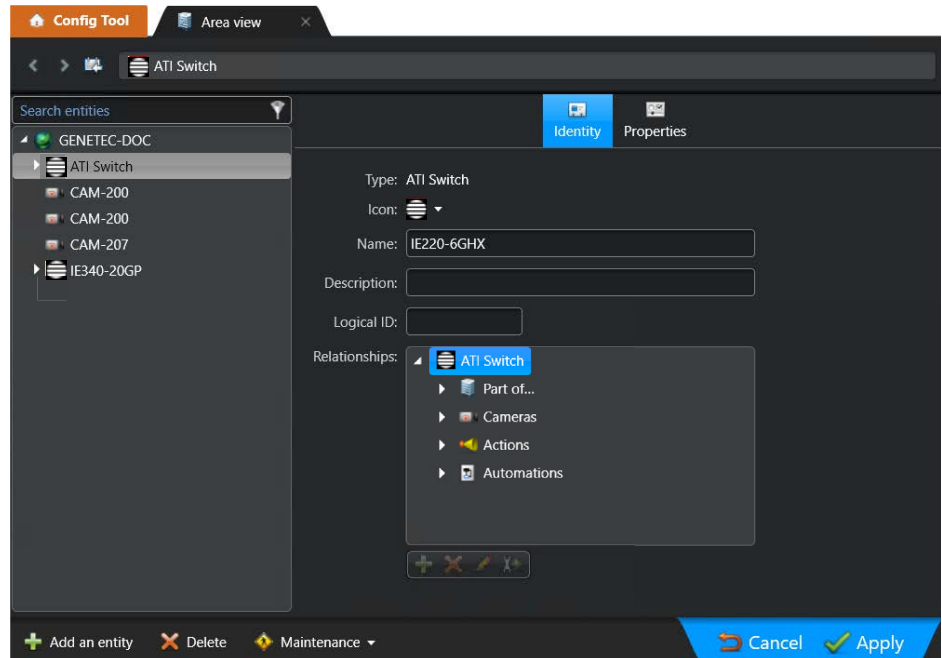


Figure 19. Adding a Name to New ATI Switch

In this example, "IE220-6GHX" is a name to be assigned to the new ATI switch.

6. Click **Apply**.

The name is assigned to the new ATI switch.

7. Click **Properties** as shown in Figure 20.

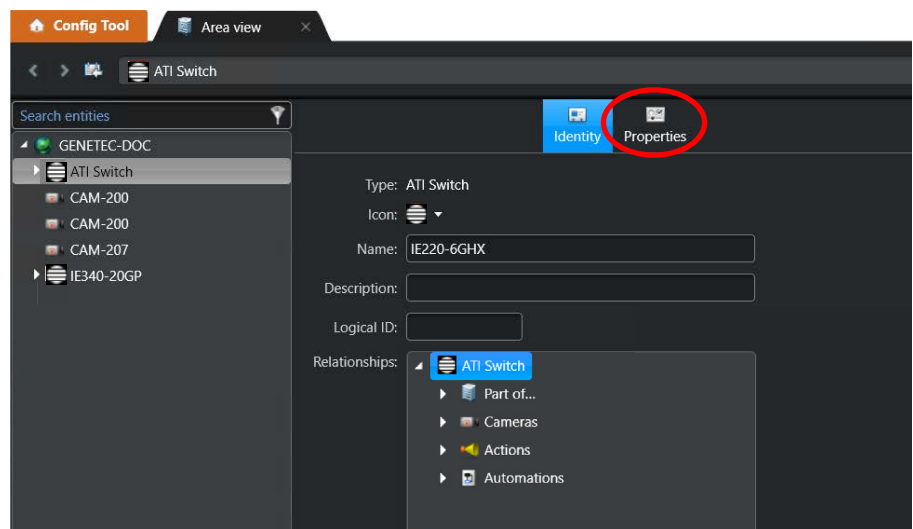


Figure 20. Adding an ATI Switch - Properties

8. Enter the following fields on the ATI switch properties page as shown in Figure 21.

- ❑ Assigned To
- ❑ IP Address
- ❑ User Name
- ❑ Password

---

### Note

You must select the correct StreamConnect instance in the **Assigned To** drop-down menu for your ATI switch if multiple StreamConnect instances are running on different servers. For more information, see Figure 3 on page 8.

---

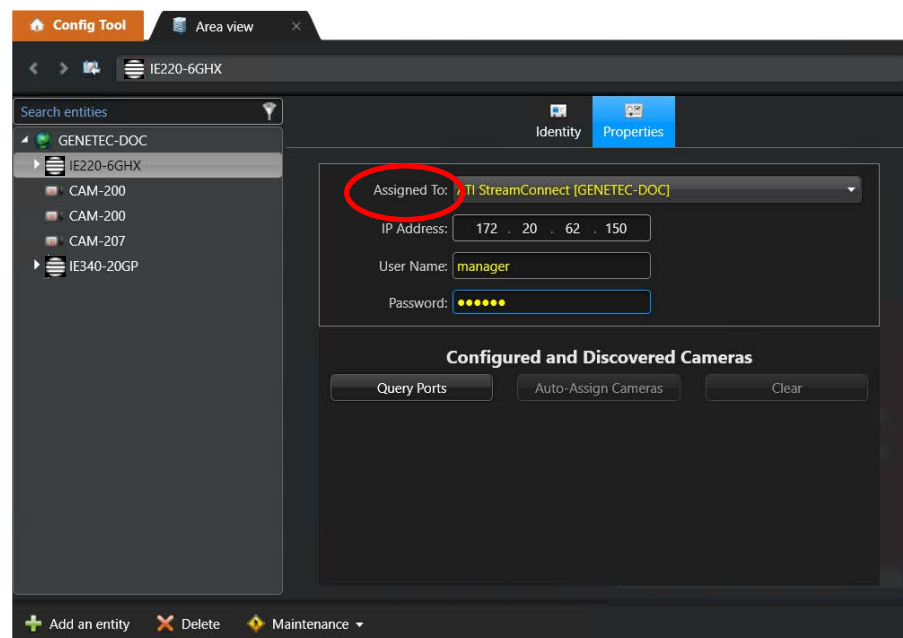


Figure 21. Setting the Switch IP Address and Login Credential

9. Click **Apply**.

The ATI switch is added.

## Associating Cameras to Allied Telesis Switch Ports

To associate the surveillance cameras to Allied Telesis switch ports:

1. Ensure that the cameras and Allied Telesis switches are cabled and powered on.
2. Open **Config Tool** and log in.

The **Config Tool** window appears.

3. Click **Area View**.

4. Select an ATI switch in the left pane.
5. Click **Properties**, as shown in Figure 21 on page 22,
6. Click **Query Ports**.

A list of ports is displayed with the current camera assignments.

7. To assign cameras to switch ports automatically, click **Auto-Assign Cameras**.

### Note

The **Auto-Assign Cameras** function detects which switch ports cameras are connected to if the cameras are plugged in and powered on.

Cameras are assigned to ports. See Figure 22.

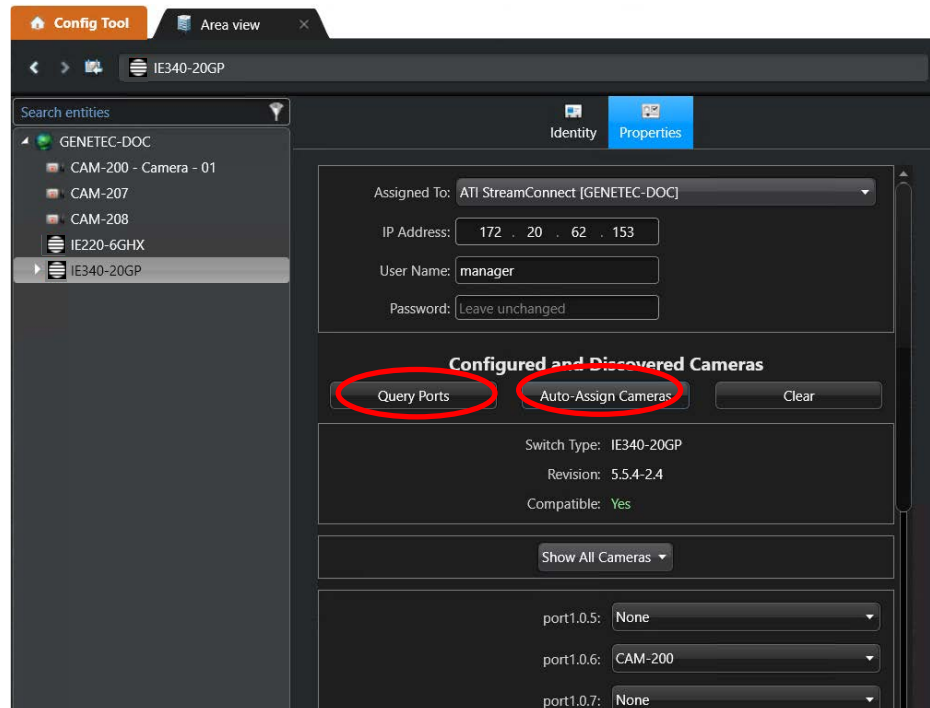


Figure 22. Displaying Ports and Associate Cameras

8. Click **Apply** to save the camera assignment.
9. To assign cameras manually, click a drop-down menu for the port that you want to assign a camera.
10. Select a camera from the drop-down menu.
11. If the camera that you want to assign to the port does not appear in the drop-down menu, select **Other...** as shown in Figure 23 on page 24.

---

**Note**

If cameras do not appear in the port drop-down menu, they may not be plugged in or powered on.

---

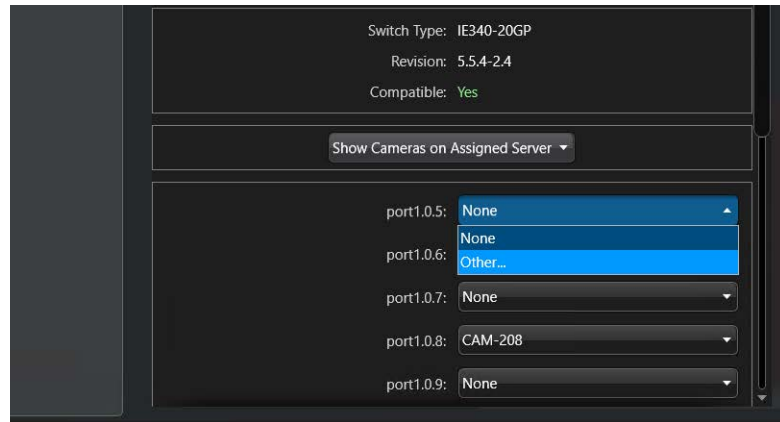


Figure 23. Assigning a Camera Manually

The Camera Selection window appears.

12. Select a camera to assign to the port from the drop-down menu. See Figure 24.

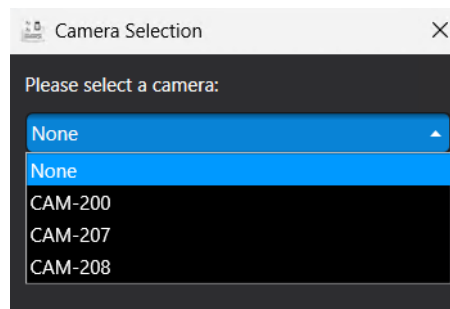


Figure 24. Selecting a Camera to Assign to a Port

---

**Note**

The available cameras for port assignment are normally limited to cameras that are associated with an archiver of the same server as the StreamConnect instance. If you want to select cameras other than the cameras on the same server, click **Show Cameras on Assigned Server** to change it to **Show All Cameras**.

---

13. Click **OK**.
14. Click **Apply** when a change confirmation window appears.

The camera assignment is saved.



## Managing the Allied Telesis Switch Ports Connected to Cameras

After associating cameras to ATI switch ports, you can perform the following tasks:

- ❑ “Viewing the Power Consumption on the ATI Switch and Ports,” next
- ❑ “Enabling Ports and Power over Ethernet, or Modifying Power Allocation” on page 27
- ❑ “Rebooting the ATI Switch” on page 28
- ❑ “Enabling Ports and Power over Ethernet Using Security Desk” on page 29

### Viewing the Power Consumption on the ATI Switch and Ports

To view the current power usage of a switch port:

1. Ensure that the cameras and Allied Telesis switch are cabled and powered on.
2. Open **Config Tool** or **Security Desk** and log in.

The **Config Tool** or **Security Desk** window appears.

#### Note

To access ATI Switch Management using **Security Desk**, you must log in as a user with appropriate permissions. See “Managing User Access” on page 31.

3. Click the **ATI Switch Management** icon. See Figure 25.

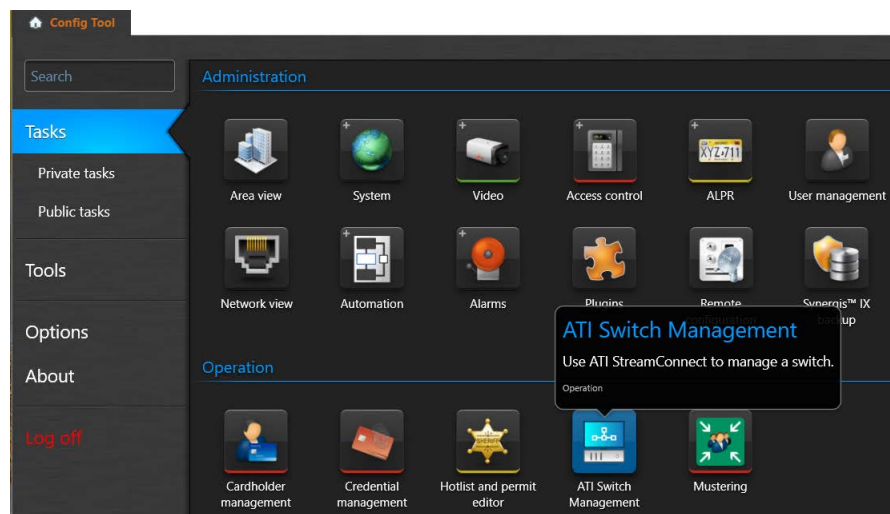


Figure 25. ATI Switch Management

If the Allied Telesis StreamConnect page in Figure 26 appears, go to Step 4.

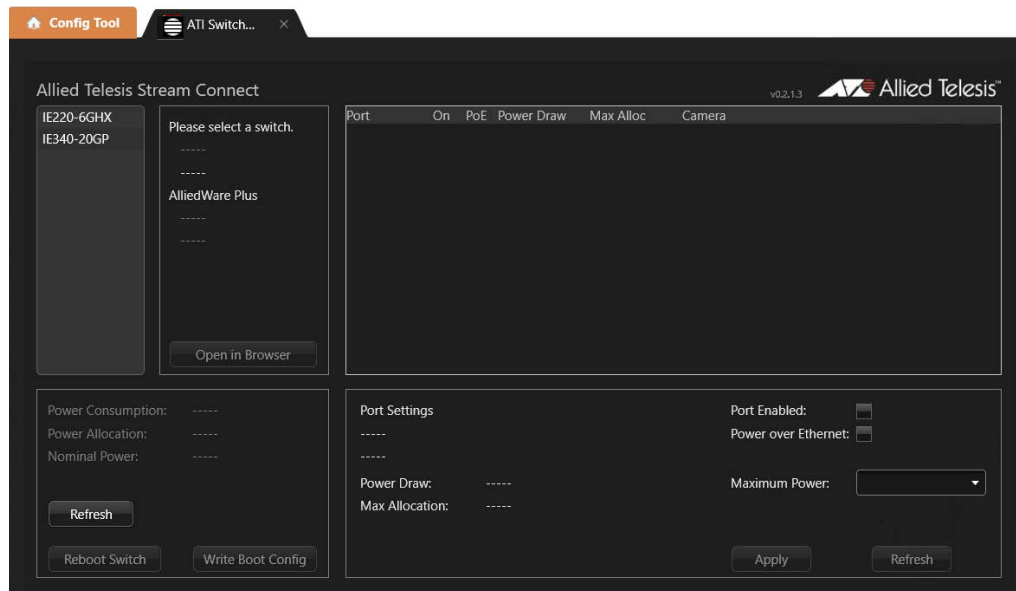


Figure 26. ATI Switch Management Page

The warning in Figure 27 appears when the ATI Switch Management task fails to open.

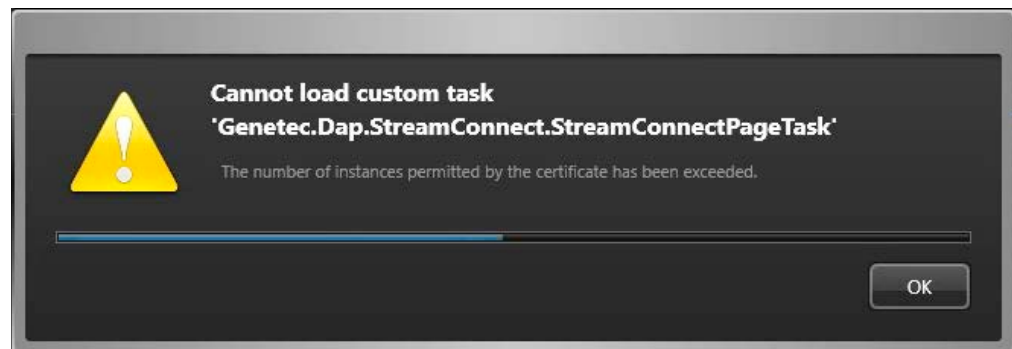


Figure 27. Warning: Insufficient Instances are Available on the License

If sufficient StreamConnect instances are *not* available in the license pool, the warning window displays the message: "The number of instances permitted by the certificate has been exceeded."

For more information, go to "Genetec™ Licensing Requirement" on page 10.

4. Click a switch, then a port that your camera is connected to.

The switch and port information are displayed. See Figure 28.

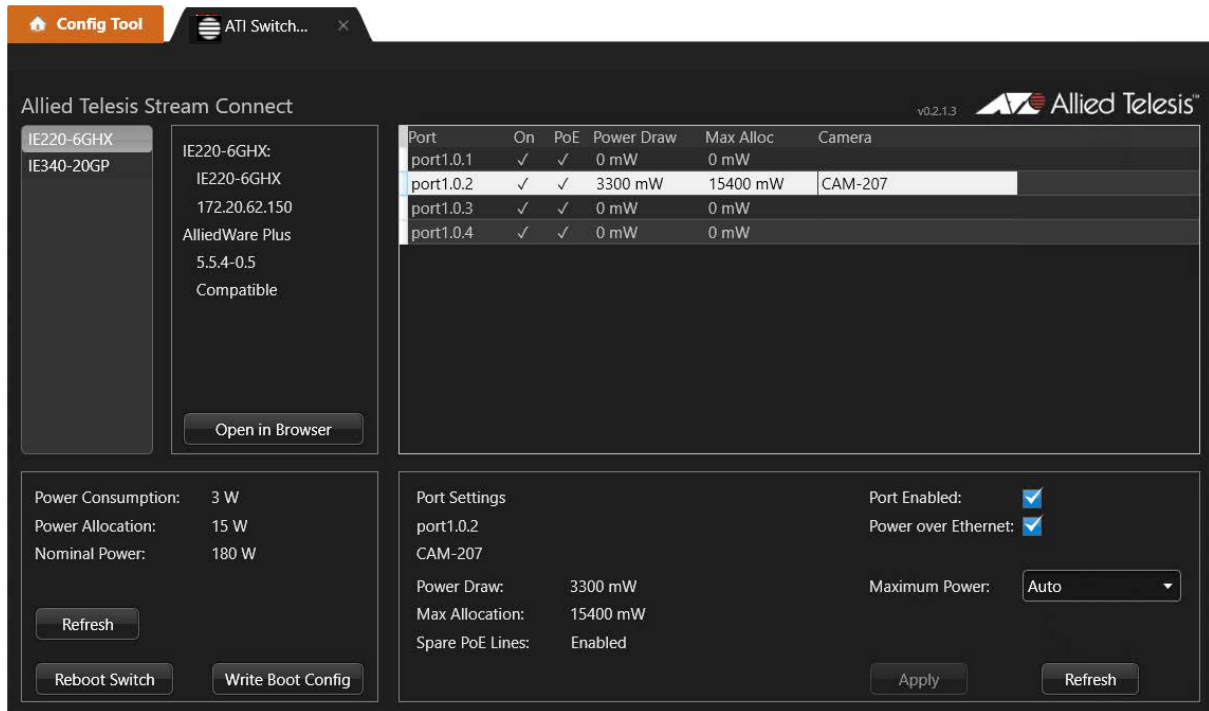


Figure 28. ATI Switch Management with Switch and Port Information

**Enabling Ports  
and Power over  
Ethernet, or  
Modifying Power  
Allocation**

To enable and disable the switch port or Power over Ethernet on the port, or to modify the maximum power setting for the port:

1. Display the ATI Switch Management page as shown in Figure 28 on page 27.

See “Viewing the Power Consumption on the ATI Switch and Ports” on page 25.

2. Find the port information section as shown in Figure 29

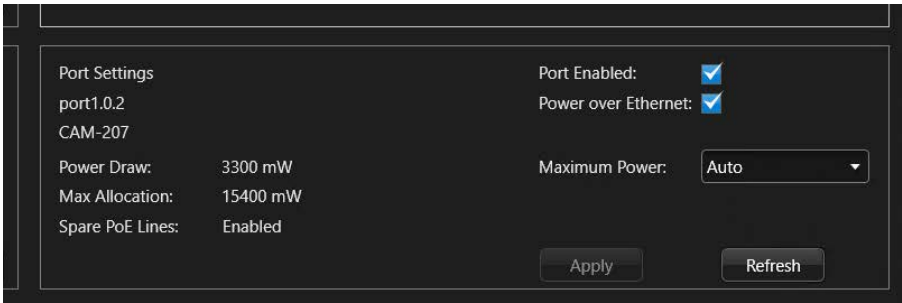


Figure 29. Port Information on ATI Switch Management Page

3. To disable the port, uncheck the checkbox for the **Port Enabled**.

To enable the port, check the checkbox for the **Port Enabled**.

4. To disable PoE on the port, uncheck the checkbox for the **Power over Ethernet**.

To enable the port, check the checkbox for the **Power over Ethernet**.

5. To modify the maximum power on the power, select one of the options in the drop-down menu for **Maximum Power**.
6. Click **Apply**.

The changes you made are applied.

7. Click **Write Boot Config**. See Figure 30 on page 28.

---

**Note**

Clicking **Write Boot Config** updates the switch's boot configuration. Your changes remain after you reboot the switch.

---

## Rebooting the ATI Switch

To reboot an ATI switch:

1. Display the ATI Switch Management page as shown in Figure 28 on page 27.

See "Viewing the Power Consumption on the ATI Switch and Ports" on page 25.

2. Find the switch power information section. See Figure 30.

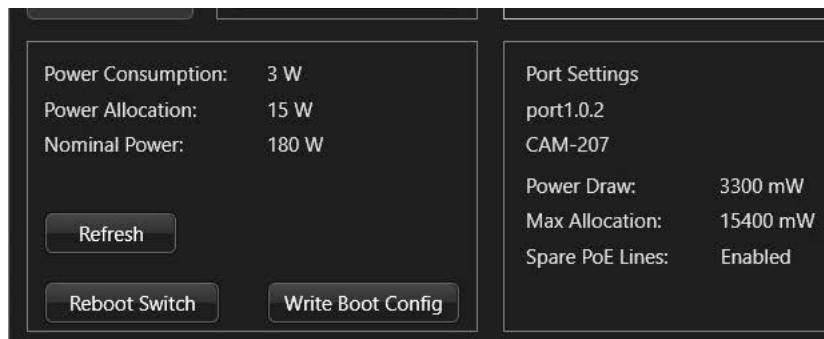


Figure 30. Switch Power Information on ATI Switch Management Page

3. Click **Write Boot Config** if necessary.

---

**Note**

Clicking **Write Boot Config** updates the switch's boot configuration. Your changes remain after you reboot the switch.

---

4. To reboot the switch, click **Reboot Switch**.

The switch is rebooted.

## Enabling Ports and Power over Ethernet Using Security Desk

To enable and disable the switch port or Power over Ethernet on the port using **Security Desk**:

1. Open **Security Desk** and log in.

The **Security Desk** window appears.

### Note

To access ATI Switch Management using **Security Desk**, you must log in as a user with appropriate permissions. See “Managing User Access” on page 31.

2. Click the **Monitoring** icon. See Figure 31 on page 29.

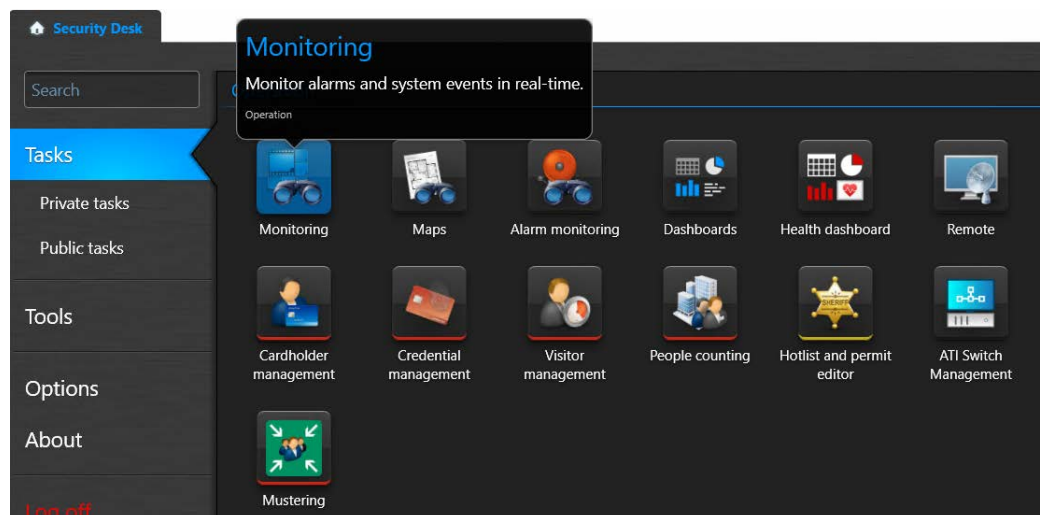


Figure 31. Monitoring on Security Desk Window

The **Monitoring** page appears.

3. Double-click the camera name in the left pane or drag the camera name to a middle pane to select the camera. See Figure 32 on page 30.

The port information of the selected camera is displayed on the **ATI** StreamConnect panel on the right, if the port has been associated to an ATI switch port.

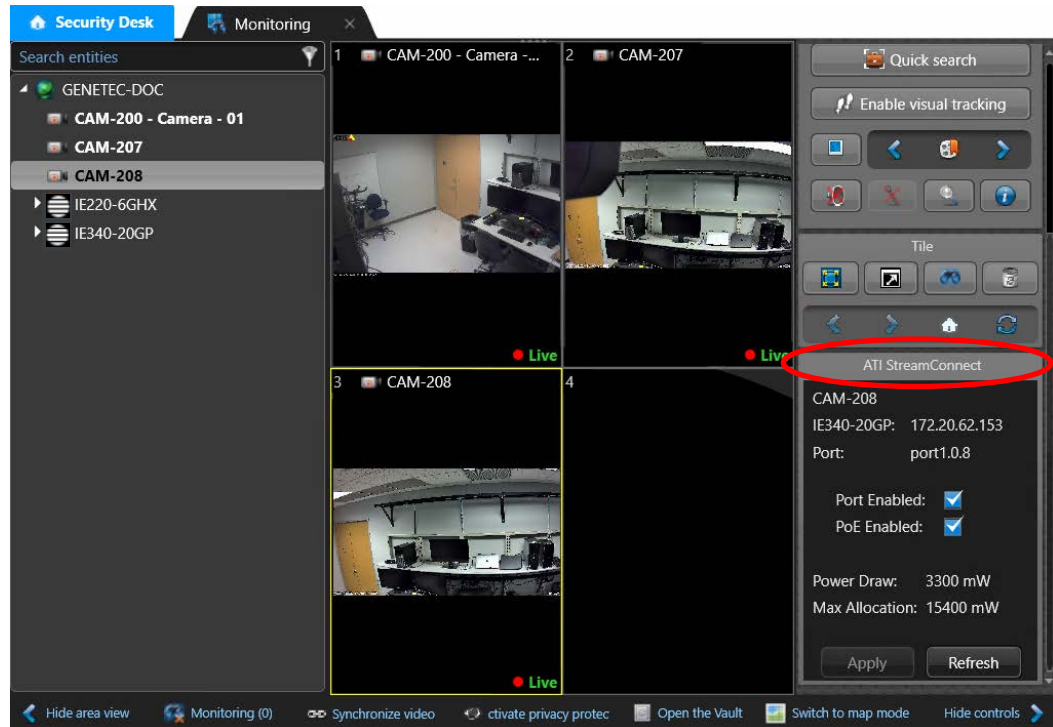


Figure 32. Monitoring Page on Security Desk

The port information of the selected camera is displayed on the **ATI StreamConnect** panel on the right, if the port has been associated to an ATI switch port.

If the StreamConnect panel does not appear, check the following:

- ❑ Ensure that the StreamConnect software has been properly installed on the machine.
  - ❑ Ensure that there are sufficient StreamConnect connection instances available on the license. Refer to “Genetec™ Licensing Requirement” on page 10 to verify the number of available connection instances on your system.
  - ❑ Ensure that the camera has been properly associated with an ATI switch port.
4. To disable the port, uncheck the checkbox for the **Port Enabled**.  
To enable the port, check the checkbox for the **Port Enabled**.
  5. To disable PoE on the port, uncheck the checkbox for the **Power over Ethernet**.  
To enable the port, check the checkbox for the **Power over Ethernet**.
  6. Click **Apply**.

The changes you made are applied.

## Managing User Access

You can assign different sets of ATI StreamConnect access privileges to a user or user group.

**StreamConnect Privileges** Table 1 shows three types of privileges, their allowed tasks, and where to perform these tasks.

Table 1. ATI StreamConnect Privileges

<b>StreamConnect Privilege</b>	<b>Allowed Tasks</b>	<b>Access and Instructions</b>
Configure ATI Switches	<ul style="list-style-type: none"> <li>❑ Add and delete an ATI switch</li> <li>❑ Modify the settings of an ATI switch, such as an IP address and credentials of the added ATI switch</li> <li>❑ Assign cameras to ATI switch ports</li> <li>❑ Modify camera assignments to ATI switch ports</li> </ul>	<p>Area View on <b>Config Tool</b></p> <p>See the following links:</p> <ul style="list-style-type: none"> <li>❑ “Adding an Allied Telesis Switch” on page 19</li> <li>❑ “Associating Cameras to Allied Telesis Switch Ports” on page 22</li> </ul>
Administer ATI Switches	<ul style="list-style-type: none"> <li>❑ Enable or disable an ATI switch port</li> <li>❑ Enable or disable PoE on an ATI switch port</li> <li>❑ View the PoE power draw and maximum power allocation on an ATI switch port</li> <li>❑ Change the maximum power allocation of a switch port</li> <li>❑ Reboot an ATI switch</li> </ul>	<p>ATI Switch Management on <b>Config Tool</b> or <b>Security Desk</b></p> <p>See the following links:</p> <ul style="list-style-type: none"> <li>❑ “Enabling Ports and Power over Ethernet, or Modifying Power Allocation” on page 27</li> <li>❑ “Viewing the Power Consumption on the ATI Switch and Ports” on page 25</li> <li>❑ “Rebooting the ATI Switch” on page 28</li> </ul>
Operate ATI Switch Ports	<ul style="list-style-type: none"> <li>❑ Enable or disable an ATI switch port</li> <li>❑ Enable or disable PoE on an ATI switch port</li> <li>❑ View the PoE power draw and maximum power allocation on an ATI switch port</li> </ul>	<p>Monitoring on <b>Security Desk</b></p> <p>See the following links:</p> <ul style="list-style-type: none"> <li>❑ “Enabling Ports and Power over Ethernet Using Security Desk” on page 29</li> <li>❑ “Viewing the Power Consumption on the ATI Switch and Ports” on page 25</li> </ul>

## Guidelines to Setting ATI StreamConnect Privileges

Here is a list of guidelines for assigning privileges for a user or user group:

- ❑ ATI switch configuration can be performed only on **Config Tool** on the main server. Even if a user or user group is permitted to the Configure ATI Switches privilege, without access to **Config Tool**, the user or user group cannot perform the tasks that the Configure ATI Switches privilege allows.
- ❑ Typical video monitoring operators only require the Operate ATI Switch Ports privilege. The tasks that the Operate ATI Switch Ports privilege allows for are:
  - Application privileges > Security Desk
  - Task Privileges > Operation < Monitoring
  - Action Privileges > Cameras > View Live Video

## Assigning ATI StreamConnect Privileges for a User or User Group

To assign or modify ATI StreamConnect privileges for a user group or user:

1. Open **Config Tool** and log in.

The **Config Tool** window appears.

2. Click the **User management** icon. See Figure 33.

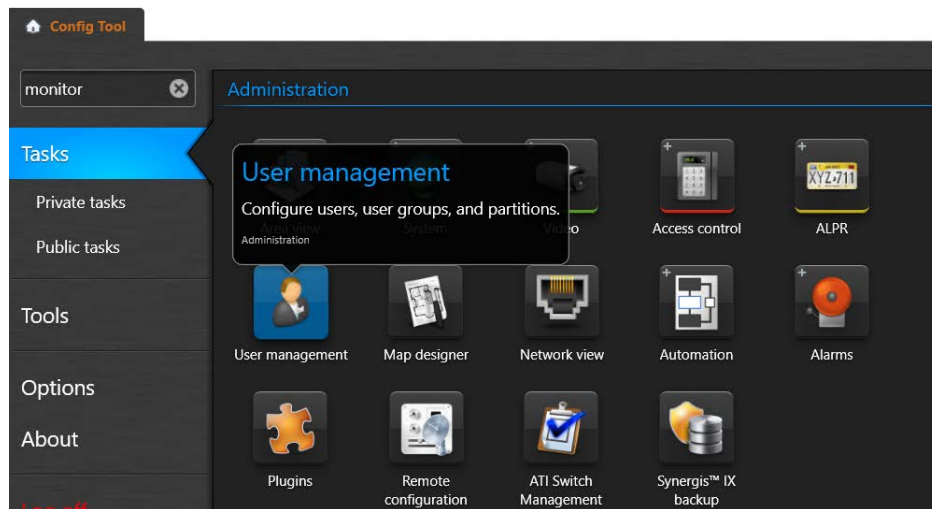


Figure 33. User Management on Config Tool

The User management page appears.

3. Click a user or user group in the left pane on the User management page.
4. Click **Properties** in the main pane. See Figure 34 on page 33.



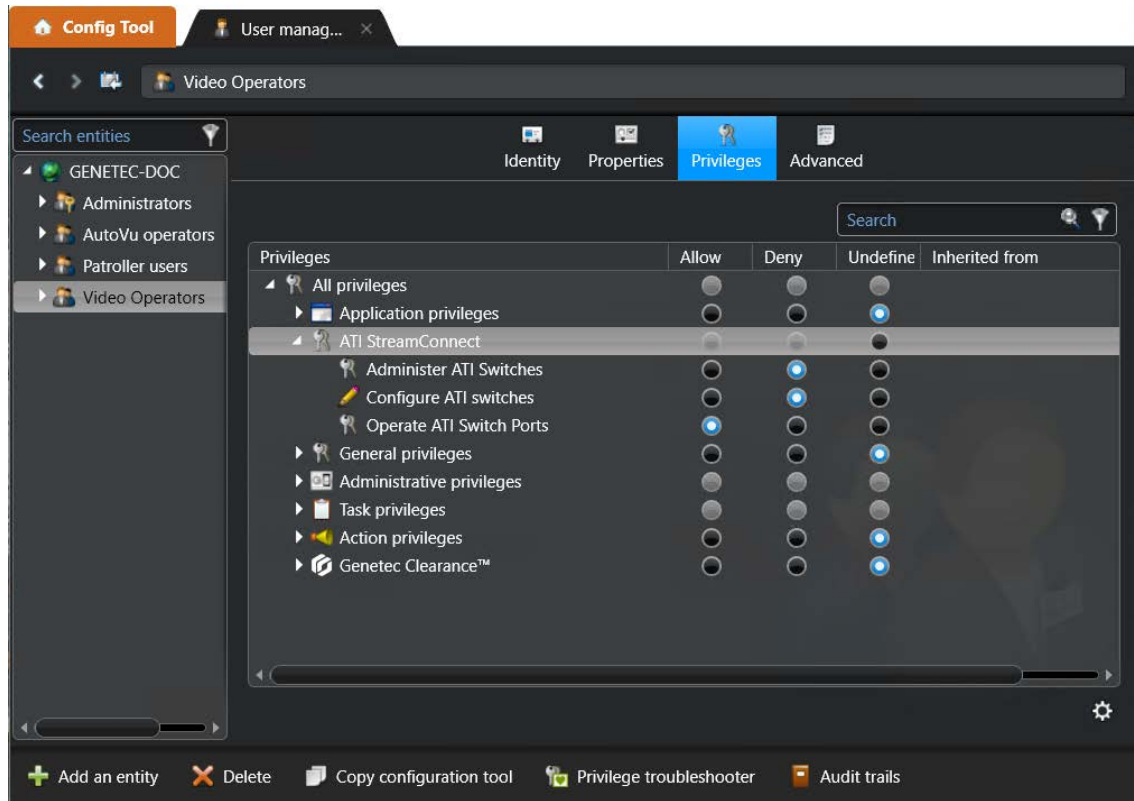


Figure 34. User Management Page

5. Change ATI StreamConnect privilege settings by choosing the radio buttons for the following options for ATI StreamConnect:
  - ☐ **Administer ATI Switches**
  - ☐ **Configure ATI Switches**
  - ☐ **Operate ATI Switch Ports**
6. Change privileges other than ATI StreamConnect if necessary.
7. Click **Apply**.

The changes are applied.

## Limiting User Access to Cameras, Switch, StreamConnect

---

Genetec™ Security Center offers a feature that allows you to restrict user access to specific entities, such as cameras and switches, using partitions.

If you want only designated users or user groups to access a specific group of switches and connected cameras, with Genetec™ Security Center's partitioning mechanism, you can group these entities together into a partition and configure only those users or user groups to have access to the partition.

---

### Note

Allied Telesis recommends that all cameras, switches, and plugin instances that are logically associated together be placed within the same partition. If different partitions are used for a camera, its connected switch, and the associated plugin instance, then a user must have access to all of those partitions to operate the StreamConnect plugin correctly.

---

Here are four steps to limit user access using a partition:

- “Creating a Partition” on this page
- “Moving Entities into the Partition” on page 37
- “Moving Plugin Instances into the Partition” on page 38
- “Limiting a User or User Group to Access only Entities in Partitions” on page 39

### Creating a Partition

To create a partition:

1. Open the **Area View** task in Config Tool.
2. Click **Add an Entity** and select **Show All > Partition**. See Figure 35 on page 35.

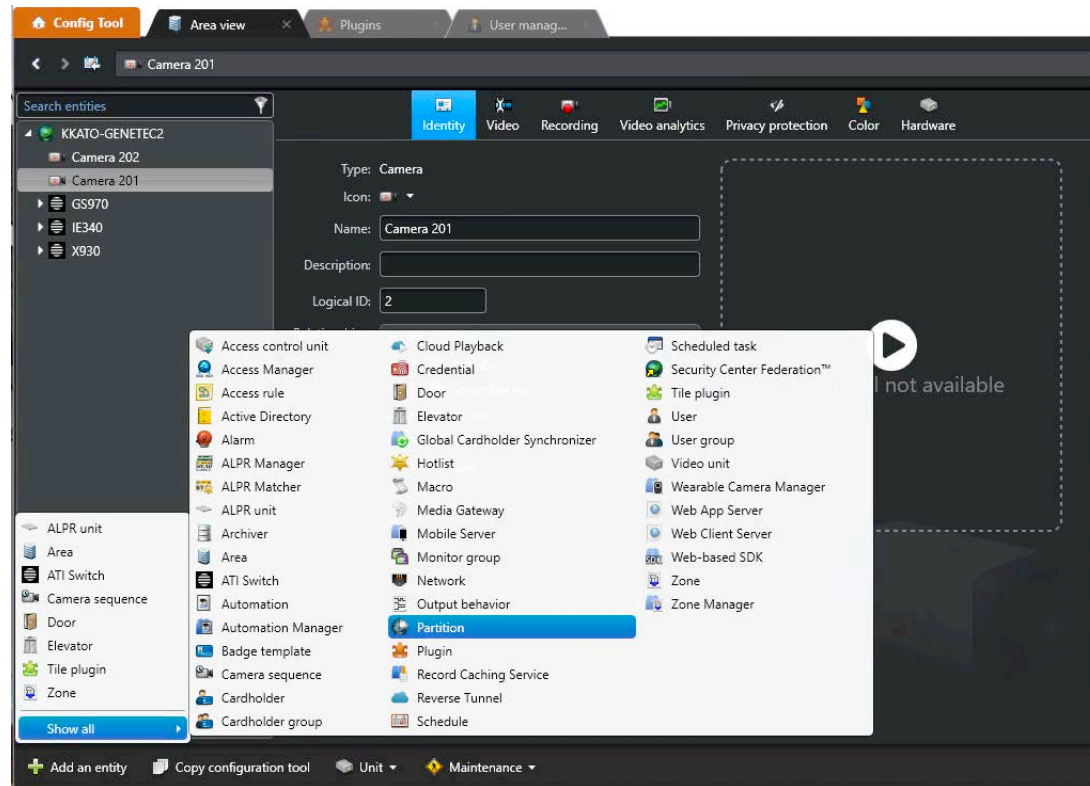


Figure 35. Area View &gt; Add an Entity &gt; Show All &gt; Partition

The Creating a Partition window appears.

- At the prompt, enter a name for the partition and optionally add a description. See in Figure 36.

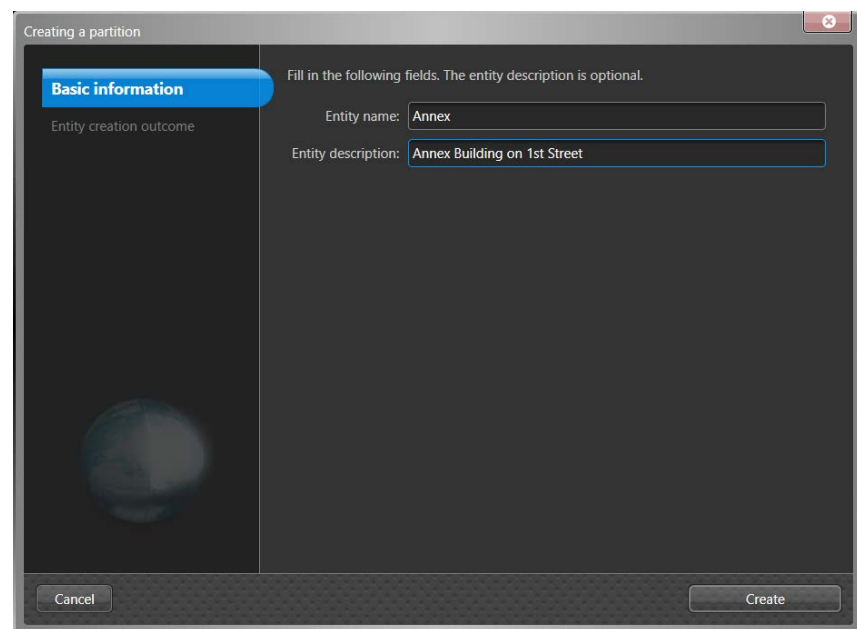


Figure 36. Creating a Partition Window

4. Click **Create**.

The message “The operation was successful” appears See Figure 37.

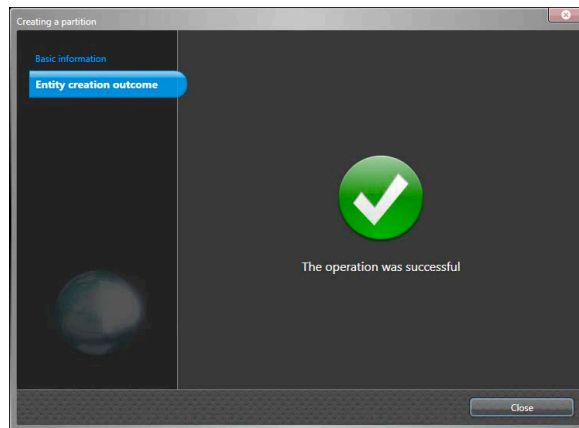


Figure 37. Creating a Partition Successfully Window

5. Click **Close**.

The new partition should appear in the left panel as shown in Figure 38.

---

**Note**

If the new partition does not appear, click the blue pie-shaped icon in the **Search entities** block.

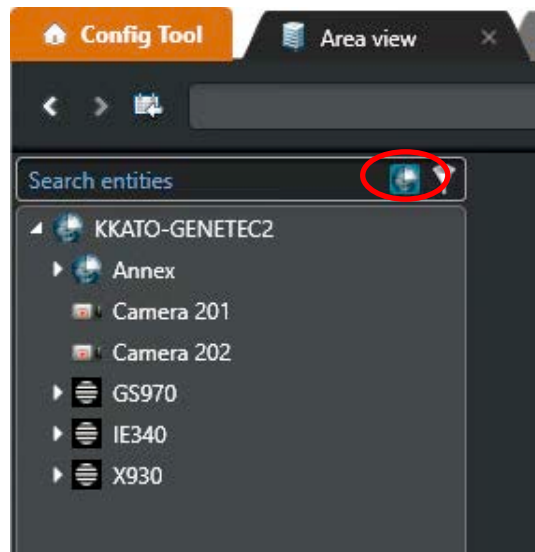


Figure 38. Partition in the Left Panel

## Moving Entities into the Partition

6. Drag entities such as cameras and switches into the new partition. See Figure 39.

### Note

Cameras and their associated switches should be placed in the same partition.

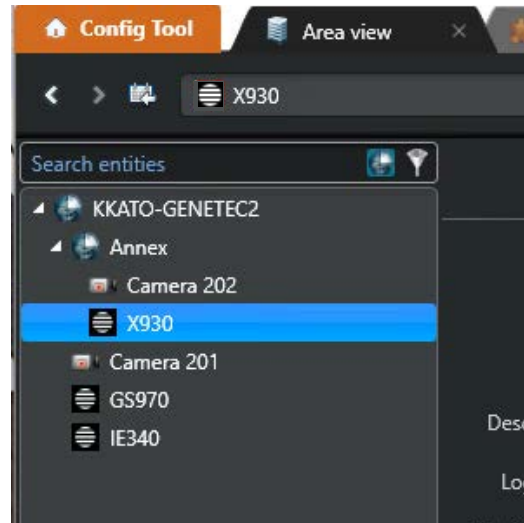


Figure 39. Moving Entities to the Partition

If multiple StreamConnect instances are running on different expansion servers, identify each switch's associated instance by clicking the **Properties** tab for the switch. See Figure 40.

In this example, the x930 switch is associated with the plugin "ATI StreamConnect GENETEC2."

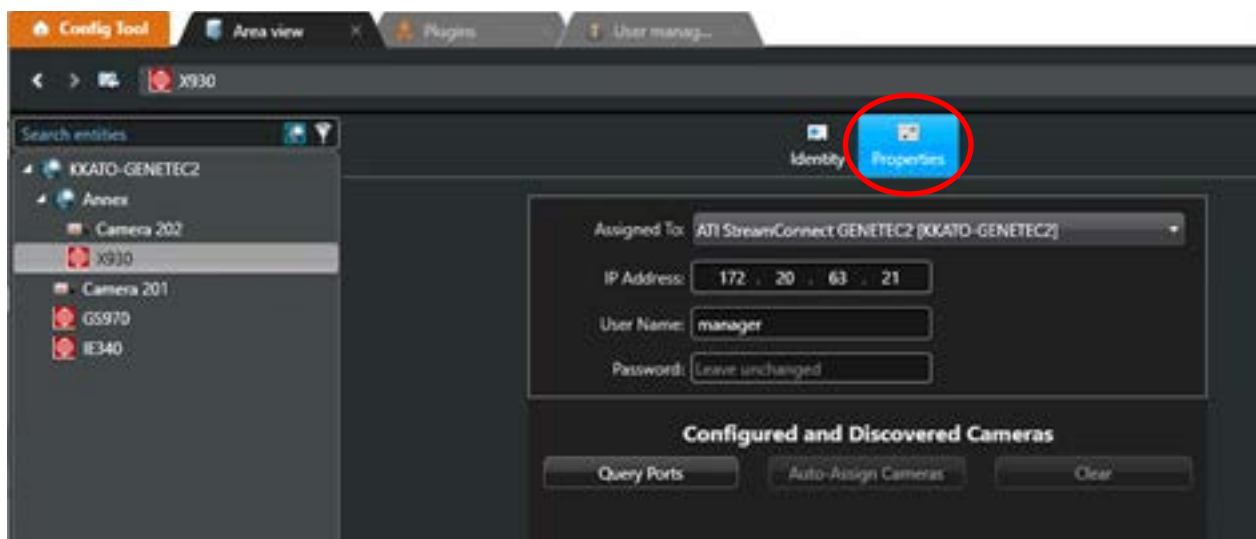


Figure 40. Properties of the Switch

## Moving Plugin Instances into the Partition

7. Open the **Plugins** task in **Config Tool**.

The **Plugins** page appears.

### Note

If the new partition does not appear, click the blue pie-shaped icon in the **Search entities** block. See Figure 41.

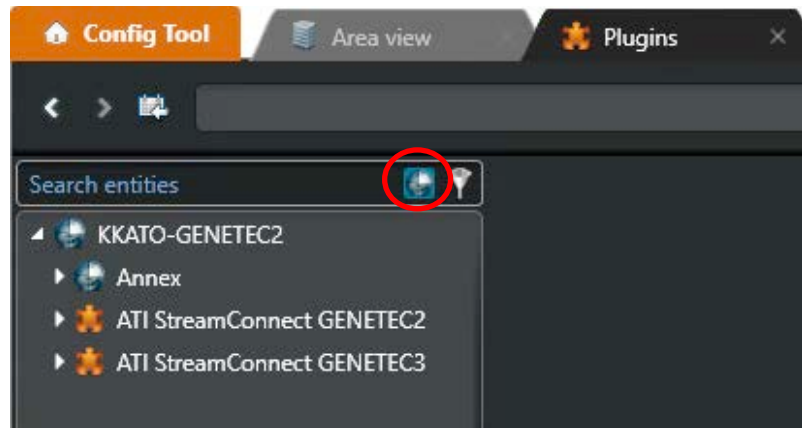


Figure 41. Showing Plugins

8. Drag plugin instances into the partition if they are associated with switches that have been moved into the partition.

In Figure 40 on page 37, the **ATI StreamConnect GENETEC2** plugin instance is associated with the x930 switch in the **Annex** partition. That plugin instance should be moved into the partition.

The window to select options in Figure 42 appears.



Figure 42. Selection of Moving Children's Entities to the Partition

9. Select **Add entities and their children** to move the plugin instance into the partition.

The instance is moved in the partition. See Figure 43 on page 39.

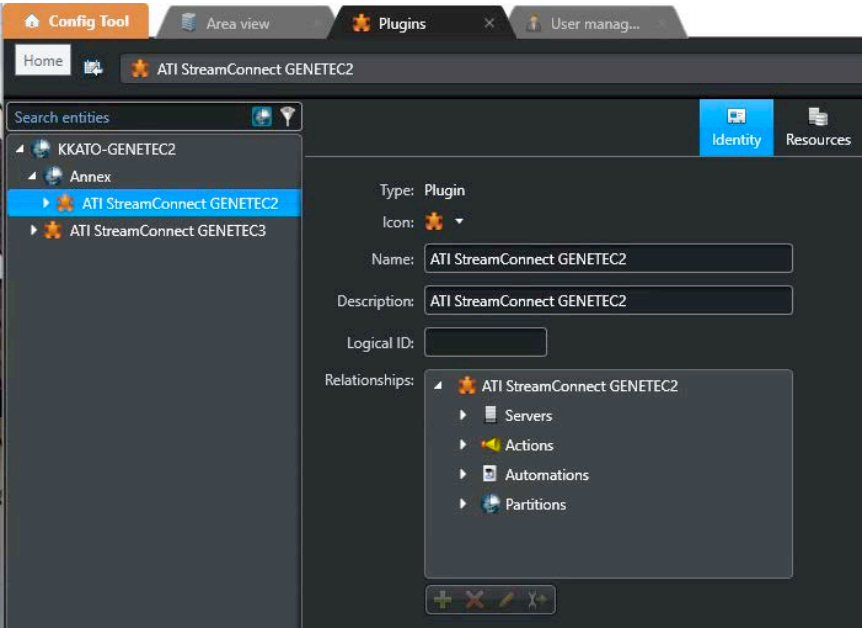


Figure 43. Plugin Instance in the Partition

**Limiting a User  
or User Group to  
Access only  
Entitles in  
Partitions**

- 10. Open the **User Management** task in **Config Tool**.  
The **User management** page appears.
- 11. Click a user or user group in the left pane.
- 12. Click the **Access rights** tab in the main pane. See Figure 44.

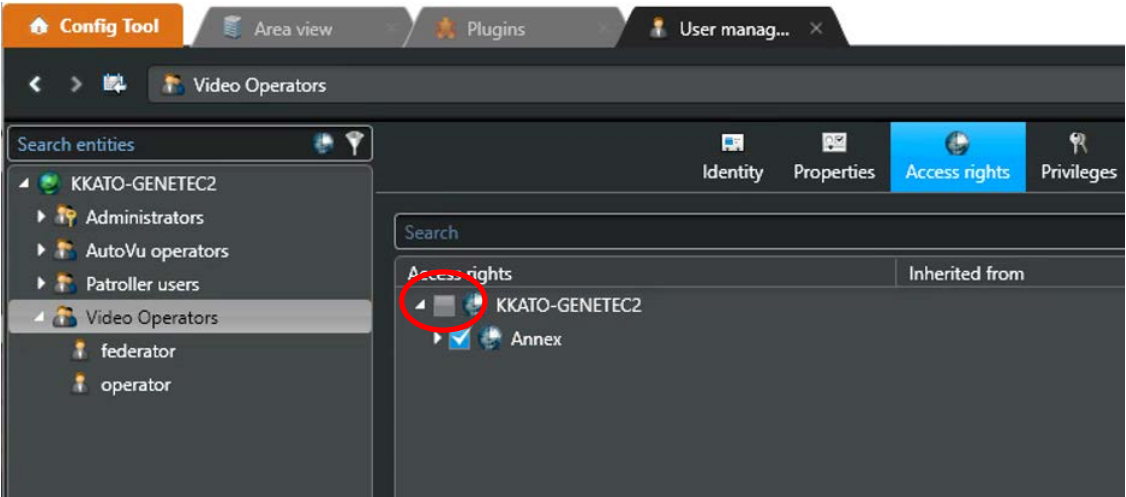


Figure 44. User Management > User or User Group > Access Right Tab

13. Uncheck the root partition access.

The root partition typically has the name of the directory server. In this example in Figure 44 on page 39, the name is “KKATO-GENETEC2.”

14. Check the only the partitions to which the user or user group should have access.

This example restricts the “Video Operators” user group to the “Annex” partition. It means that these users are not allowed to access any cameras, switches, or plugin instances outside this partition.